

fave





# his & his

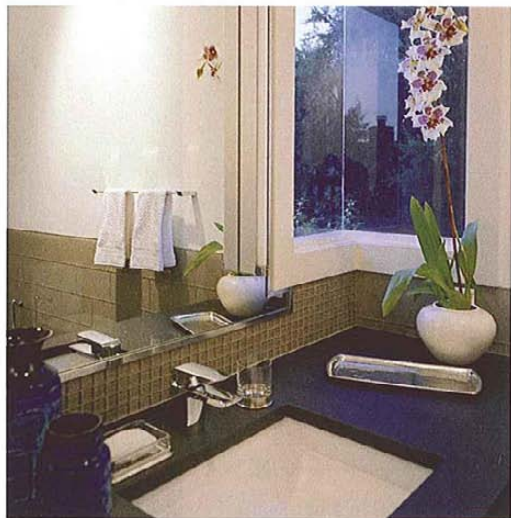
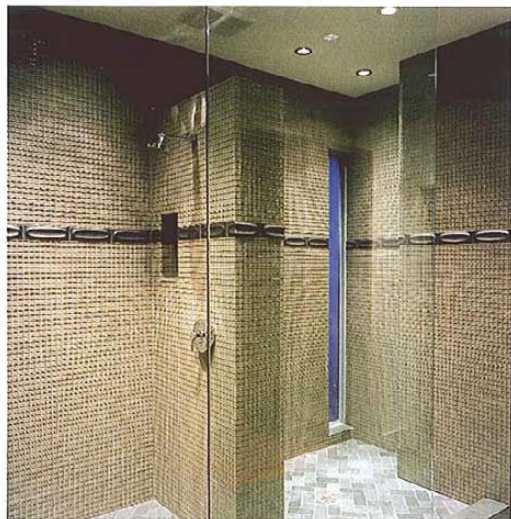
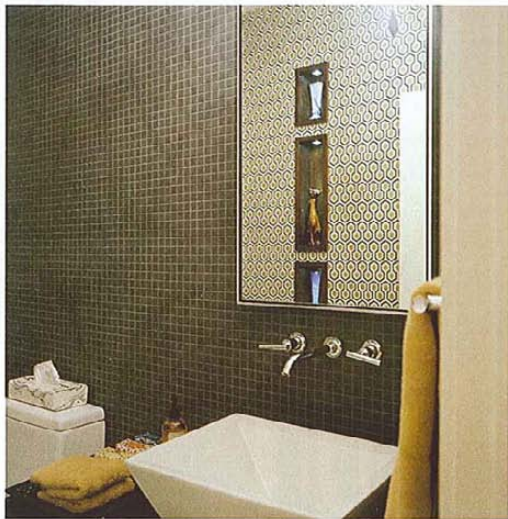
A MASTER BATH FOR TWO  
MEN GETS AN OVERHAUL  
FROM THE CREATIVE GENIUS  
OF CG&S DESIGN-BUILD.

## fave raves

- **Architecture and Design / CG&S Design-Build**, 402 Corral Lane, Austin, Texas 78745, 444-1580 [www.cgsdb.com]
- **Project Team: Project Designer/** Mark Evans; **Project Manager /** Jim Venable
- **Materials/Vendors:**  
**Cabinetry /** OSI Custom Cabinets  
**Shower Tile /** Walker Zanger-Glass Mosaic [Sharkskin]  
**Accent Tile /** Heath Ceramics-Oval Gray Whale  
**Sinks /** Kallista and Barbara Barry Undercounter for Him Basin  
**Fixtures /** Toto-Soiree  
**Mirror Lights /** Artemide- Rezek Basic Strip

fave  
home





## [q & a] NO MORE LIVING WITH A HIS AND HER BATHROOM FOR THIS GAY COUPLE. CG&S DESIGN-BUILD TAKES A TRADITIONAL MASTER BATH AND TRANSFORMS IT INTO A MODERN AND THOUGHTFUL PLACE TO RECHARGE AND REFRESH.

[Phillip Hudson] **q:** This project was a renovation of a personal space, not a public space in the house. Are there special considerations that you take when designing a master bath?

[Mark Evans] **a:** Yes, some considerations are whether the clients are looking for a spa-like, restful space or is a streamlined, get-in-and-get-out bath. Color is given a lot of thought, as well. For this project, we chose a soothing palette of grays accented with dark stained cabinetry. To achieve the clients' goals we enlarged the opening leading into the master bath and created a centralized glass-partitioned shower for two. The showers are separated by a tiled wall with a pass-through niche. Natural light filters into the shower area through two tall, frosted-glass windows on the outside wall. Down lights provide additional light when needed. Rift-sawn oak cabinets with illuminated art niches above the cabinet doors and drawers frame the shower area. The two separate bathrooms were retiled with larger pieces of the same grey glass we used in the shower, and the floor was covered in a herringbone pattern of black slate, creating a continuous flow throughout the master bath suite.

**q:** This bathroom is designed for two men. Did that change the scale of the spaces?

**a:** Yes, the bathroom was originally designed with his and hers toilets and with a shared tub and shower in the middle. We gutted the entire space, but left the original room layout. The clients had no use for a tub so in place of the original tub and shower we designed two generous showers. Each shower is very roomy and there is even a space for a freestanding bench if the clients want one in the future.

**q:** What are the main factors that influenced the way you approached the design?

**a:** The clients have a beautiful collection of modern and mid-century furniture. They also collect art pottery from the 1950s to the present time. I was influenced by the clean lines and richness of color in their collections.

**q:** How did the clients' lifestyle influence the design?

**a:** Both clients are young, hard working, energetic people. They were looking for a modern bathroom that would be easy to maintain. The bathroom is contemporary without any fussiness...like the clients' lifestyles.

**q:** What is the most crucial factor in a redesign of this magnitude?

**a:** The tile design and work was critical. We met with the installer several times to go over the layout. We wanted as few cuts as possible in the Heath accent tiles. When working with small glass mosaic tiles, it is essential that all the grout lines are perfectly square, especially in a floor to ceiling application as in this bathroom. Luckily, the installer is an artist along with being a craftsman.

**q:** Describe your design sensibilities.

**a:** Personally, I lean toward modern, clean, spare design with beautiful details and lots of life. In this project, the gray of the glass mosaic tiles could feel a little cold, but the deep stain on the wood and the hand-made slate tiles on the floor add warmth and soul to the spaces.



fave home picks



Lynn bed/available at  
Nest Modern



Satin finish silver lamp/  
available at Wendow

[Personally, I lean toward modern, clean, spare design with beautiful details and lots of life.]

-Mark Evans

**fave home picks**



Gehry silver bowl/  
available at Tiffany & Co.



Audrey lamp/available  
at Finch

