

**QR**  
**QUALIFIED REMODELER**

# First impressions drive repeat business

*'No-call' woes*

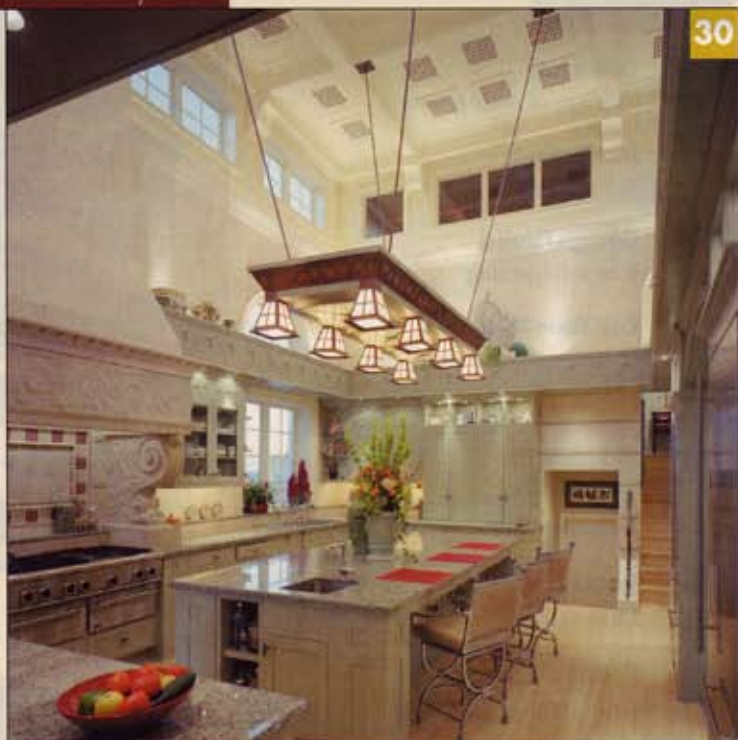
*'04 outlook: solid and sustainable*

*Hiring a sales pro*

## Cover Story

30  
**Design Solutions**

CG&S Design-Build's past success with the client led to this breathtaking project



On the cover: CG&S Design-Build, Austin, TX. Photo by R. Greg Hursley, Inc.

**cygnus**  
Business Media



26

26 **Lessons Learned**

Learning from a business failure

28 **Hire and retain a sales pro**

In part one of two, *QR* sales columnist Keith Rosen offers his advice on hiring a salesperson

38 **Solid and sustainable**

2004 looks good for the remodeling industry

44 **No-call woes**

Dealing with the new Do-Not-Call list

48 **Award winners**

Top companies honored at Baltimore event



44

**QR on the Web**

- NARI Certification
- Archives of past issues
- Industry calendar



48

[www.qualifiedremodeler.com](http://www.qualifiedremodeler.com)

# A repeat SUCCESS



Stewart Davis

**A past family room remodel led to this  
kitchen-turned-addition project**

SET ATOP THE ROLLING COUNTRY HILLS of west Austin, CG&S Design-Build, an architectural firm and general contractor from Austin, TX, envisioned a remodel that allowed the 5,946-sq.-ft. Texan home to capture the dramatic scenic views of the Colorado River and surrounding hills and rooftops that border the home.

## A family tradition

Getting its start in the '50s from well-known Texan remodelers Clarence and Stella Guerrero, CG&S didn't add the design/build aspect to the company until 1994 when Stewart Davis, architect for CG&S, joined the company.

"This addition fundamentally changed the nature of the entire business," says Davis. "The company started with small remodels and in 1994 became the premier design-build firm in Austin."

Today, CG&S Design-Build has 15 employees, including an architect and his intern, five to six superintendents, skilled carpenters, sales and office staff.

CG&S adopted the "team approach" to building crews for each project. "We build the perfect teams for each individual project, just as one would gather the right cast and crew for a movie," adds Davis.

While the company does some marketing, most projects come from referrals – either from previous clients or high-end builders

from the Austin area. "The Schneider residence came from a referral from another high-end builder," notes Davis. "Most builders don't like to get involved with remodeling so they refer them to us."

That referral sparked a trusting relationship between CG&S and the homeowners. After completing a family room remodel in 1997, CG&S was brought back four years later to do an extensive kitchen remodel.

"Getting asked to do another job by the same clients is always a compliment," says Davis.

"This was the most elaborate kitchen we have ever done," notes Davis. "The homeowners wanted to upgrade the existing kitchen and breakfast area to the level of the remainder of the home. These spaces were very modest compared to the size/quality of the home's other spaces and the neighborhood."

## A vertical addition

The first challenge Davis encountered was that the kitchen was land-locked horizontally. "Since we couldn't add any square feet to the house, I decided the only way to build this elaborate kitchen was to build vertically."

To give the kitchen a more dramatic appearance, Davis expanded through the roof, raising the ceiling height from 9 ft. to 21 ft. "We really added another story to the home without adding the floor," says Davis.





R. GREG HURBLEY, INC.

“Building vertically instead of horizontally is a very tricky thing to do,” adds Davis. “We also had to keep in mind that because this was a high-traffic kitchen where the family spent a lot of its time, we needed to make this huge amount of space comfortable, yet keep it really dramatic.”

To keep the space less intimidating, Davis added a large light canopy above the central island at the 9 ft. level. The molding around the kitchen is also at 9 ft. to lessen the scale of the room.

“The homeowners requested a lot of light in the rooms, so we introduced clerestory windows



**Before and After:**  
The immaculate  
Texan home  
upgraded from  
5,070 sq. ft to  
5,946 sq. ft with  
the addition of  
an office/utility/  
guest suite.



all around for natural daylight and to bring in the views that surrounded the home.

"Each piece in the room was thought out and the homeowners had an excellent knowledge of what worked and what didn't," says Davis. "The homeowners found a piece of granite and based all the colors of the kitchen around that.

Use of custom millwork, interior stone cladding and dramatic, but functional, lighting created an atmosphere of quality, beauty and style," adds Davis. "For instance, the whole kitchen is clad with stone – the custom-made stone range hood was made by Archaic, a local company who is trained in traditional stone carving. It weighs thousands of pounds and that took a lot of designing to make sure the fixture would stay put permanently."

### The remodel expands

What started out as a kitchen remodel turned into a larger project with the addition of a home office/utility/guest suite above the existing three-car garage.

"The biggest challenge in adding the suite above the garage was not to create a tall, ungainly block of an addition at the very end of the home," adds Davis.

The original home was designed in a three-part "boomerang" shape to take advantage of the panoramic hilltop views. The center section of the boomerang was the biggest and tallest mass, with the two wings to either side roughly symmetrical.

### REMODELER'S CHOICE – KEY PRODUCTS SPECIFIED:

Archaic custom stone work  
D.C. Stucco  
Designer Doors garage doors  
Kalbe & Kalbe windows  
The Roof Tile & Slate Co.

For more information  
visit [www.qualifiedremodeler.com/  
directory](http://www.qualifiedremodeler.com/directory)



"The home office/utility/guest suite had the potential of creating an awkward out-of-balance home that would not be pleasing to the eye. Our clients were very concerned with that."

To address this concern, Davis decided to keep the new roofline as low as possible by setting a low plate height (about 4 ft. 6 in. above the floor), "sheltering" the new spaces under the rafters (creating sloped ceilings at each room's perimeter), and punched curved dormers through the new level two roof where windows were needed. "This gave the interior of each room a cozy, protected feeling," adds Davis.

### Paying attention to design details

The clients also desired the addition to "dress up" the existing garage door facade as they drove in and out every day.

"The garage is an important elevation, meriting good design and oftentimes dismissed with, 'Oh, this is just a garage; it's at the side of the house; it's not important for that to look good,'" says Davis. "The garage is actually a high-traffic, high-visibility facade. Maybe not to the passers-by, but to the people who count the most — the folks who live there!"

"Regarding the home office, this area did not get the same low protected ceiling treatment, as it was on the rear face of the home, overlooking Lake Austin," says Davis. "I decided to give this room a very high ceiling and ring it with clerestory windows, similar to the new kitchen, to give excellent daylight and views. This room features fine cherry coffered ceilings and millwork and high-tech cable lighting.

"This project took 10 months to design and another 10 months to build," says Davis. "During all of this construction, the homeowners remained living in the home. Our crew insulated it very well with plywood and locks.

"At the end of phase two, the homeowners were very excited about the outcome. The entire home is well designed and fits the lifestyle of its homeowners," says Davis. "Now they have a beautiful house that complements its amazing surroundings." ■

### Stewart Davis

CG&S Design-Build, Inc., Austin, TX  
(512) 444-1580  
stewart@cgsdb.com



The kitchen remodel was accomplished by expanding vertically through the existing roof and by converting adjacent spaces to kitchen/breakfast use. Use of custom millwork, interior stone cladding and dramatic, but functional, lighting created an atmosphere for quality, beauty and style.

PHOTO: GREG HURLEY, INC.

# Award winners

Top companies honored at Baltimore event



ALMOST 300 REMODELERS turned out to join the QR staff and Top 500 sponsors Masonite and MarketSharp and Master Design Awards sponsor Jeld-Wen in honoring the top remodeling companies in the country Oct. 22 in Baltimore.

Six companies received Top 500 Top Performer Awards at the event: No. 1 on Nationals List - Disaster Kleenup International, Chicago; Whole House - BOWA Builders, McLean, VA; Bathrooms - Bath Saver, Inc., Lewisberry, PA; Windows & Doors - Castle, The Window People, Mechanicsburg; Sunrooms - Custom Patio Rooms, Pittsburgh, PA; and Other Specialty - Mid-Atlantic Waterproofing, Laurel, MD.

Seventeen Master Design Award winners also received awards in Baltimore. Scott H. Wilson Architect, Brentwood, TN, won an unprecedented seven awards: Best of Show above \$150,000; Best of Show below \$150,000; First Place, Whole House above \$500,000; First Place, Whole House below \$200,000; First Place, Conservatory/Sunroom; Second Place, Detached Structures; and Third Place, Conservatory/Sunroom.

Sixteen other companies also took home awards: Doug Walter Architects, Denver - First Place, Additions above \$100,000; First Place, Bathrooms above \$50,000; and Second Place, Whole House above \$500,000; CG&S Design-Build, Austin, TX - First Place, Kitchens above \$75,000 and Third

Place, Additions above \$100,000; McGuire, Hearn & Toms Inc., Manakin-Sabot, VA - First Place, Bathrooms below \$30,000 and Second Place, Residential Specialty; Architectural Resource, Ann Arbor, MI - First Place, Residential Specialty; Bartelt Filo Design Build, Menomonee Falls, WI - First Place, Finished Basements; Kohler Homes, Burke, VA - First Place, Detached Structures; Heirigs Property Restoration, Memphis, TN - First Place, Insurance Restoration; S.D. Lohr Inc., Waldorf, MD - First Place, Exterior Facelift; Space Craft Architecture & Construction, Columbus, OH - Second Place, Whole House \$200,000 to \$500,000; Sun Design Remodeling Specialists, Burke, VA - Second Place, Additions above \$100,000; The Sullivan Co., Newton, MA - Second Place, Kitchens above \$75,000 and Honorable Mention, Additions above \$100,000; Design Construction Concepts, Northbrook, IL - Second Place, Kitchens \$40,000 to \$75,000; Kaiser Building Co., Cranbury, NJ - Second Place, Bathrooms above \$50,000; A.R.T. Design Build, Bethesda, MD - Third Place, Kitchens \$40,000 to \$75,000; DesignLine Remodelers, Richmond, VA - Honorable Mention, Whole House below \$200,000; and Harrold Forest Dietrich Architects, Deerfield, IL - Honorable Mention, Exterior Facelift. All of the award-winning projects are posted on the QR Web site at [www.QualifiedRemodeler.com](http://www.QualifiedRemodeler.com).

For information on entering the 2004 Top 500 see p. 34, and see p. 18 for this year's Master Design Award entry forms. ■



(Clockwise from top left) Stewart Davis (left) and Billy Guerrero (right) accept CG&S Design-Build's two Master Design Awards from Jeld-Wen's Scott Browne; Scott Wilson, Scott H. Wilson Architect, receives some of his company's record seven Master Design Awards; Rick Butts, author of *The Big Butts of Life* and *The Safari Chronicles*, entertains the audience during his featured speech at this year's event at Oriole Park at Camden Yards.

RICHARD W. ROCHFORD PHOTOGRAPHER

## 2003 TOP 500 TOP PERFORMERS

Whole House	BOWA Builders Inc., McLean, VA	\$19.0 million
Kitchens	Kitchen Magic Inc., Bloomsbury, NJ	\$13.5 million
Baths	Bath Saver Inc., Lewisberry, PA	\$16.7 million
Windows/Doors	Castle, The Window People, Mechanicsburg, PA	\$29.2 million
Decks/Porches	Archadeck of Charlotte, Charlotte, NC	\$4.6 million
Roofing	State Roofing, Monroe, WA	\$7.8 million
Sunrooms	Custom Patio Rooms Inc., Pittsburgh, PA	\$15.2 million
Insurance Restoration	Belfor, Denver, CO	\$315 million
Light Commercial	Gold Coast Enterprises, Alameda, CA	\$3.1 million
Other Specialty	Mid-Atlantic Waterproofing, Laurel, MD	\$16.2 million
Design/Build	Gardner/Fox Associates, Bryn Mawr, PA	\$21.1 million
Full-Service	Thomas Construction Inc., Earth City, MO	\$25.8 million